



1870 MANITOBA CENTENNIAL 1970

MANITOBA is the place to be — especially in '70. Come, join in the celebrations for a while,

Centennial, Manitoba '70 style.

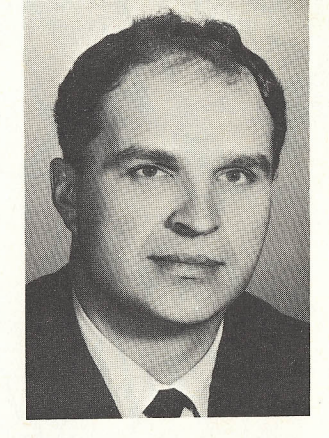
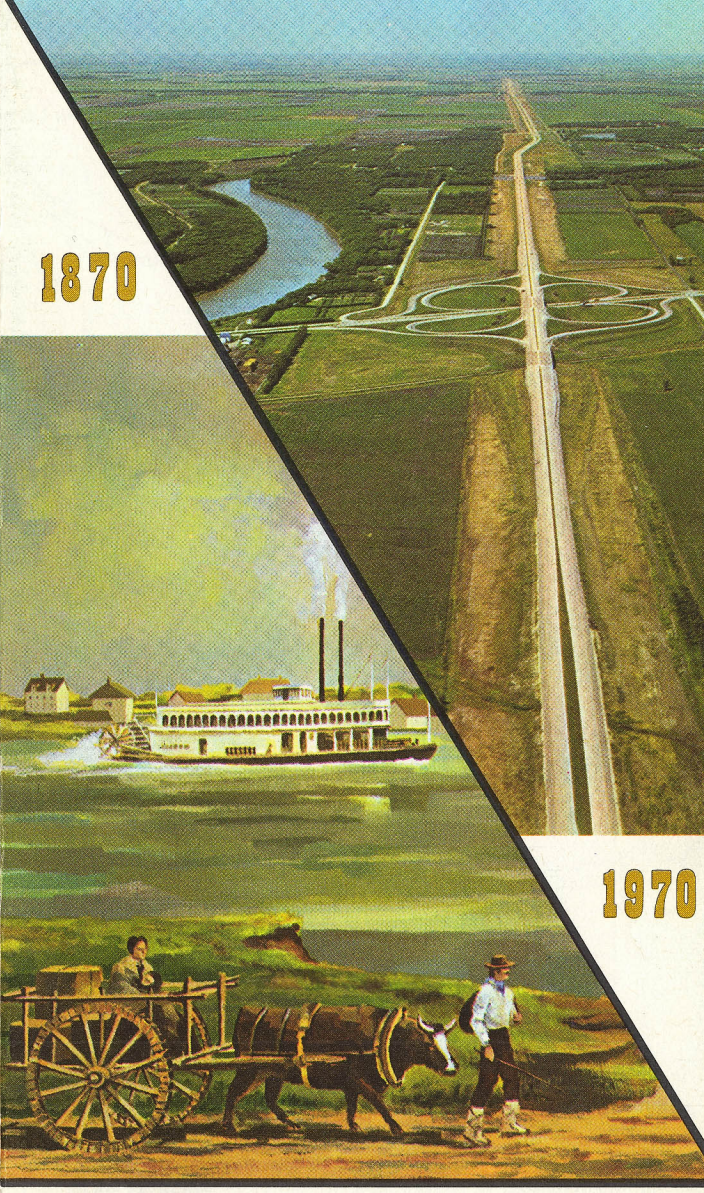
FOR FREE DISTRIBUTION COURTESY OF THE DEPARTMENT OF TRANSPORTATION PROVINCE OF MANITOBA Hon. JOSEPH P. BOROWSKI, Minister

Printed by R. S. Evans, Queen's Printer for the Province of Manitoba WINNIPEG

INDEX TO CITIES, TOWNS AND VILLAGES with population of principal points (50 or over)

Index to cities, towns and villages with population of principal points (50 or over). Includes columns for location, population, and hospital location.

MANITOBA



Joseph P. Borowski, Minister of Transportation

The first Manitoba Highways map was issued just over forty years ago, a significant step that recognized the importance of an adequate road system in the development of our province.

You will find this map has been designed to mark the 100th birthday of our province. The illustrations on this map show how our transportation system grew from pioneer beginnings to the present 3,900 miles of Provincial Trunk Highways and more than 7,400 miles of provincial roads.

We hope this map will help both Manitobans and visitors to our province to discover the diversity that is Manitoba. It can guide you to areas where special events will be held to mark our centennial, as well as to our parks, forests and recreation areas.

The highway system has contributed significantly to the expansion of our economy and a better way of life for our citizens during the first 100 years. We plan to continue improving and developing the road system to foster further expansion of this growth in our second century.

FOR FURTHER INFORMATION WRITE: TOURIST BRANCH Department of Tourism & Recreation 408-401 YORK AVE. WINNIPEG 1, MANITOBA, CANADA

Official Highway Map CENTENNIAL EDITION

WHEN TRAVELLING ON MANITOBA HIGHWAYS. Put your trash into Orbit...

THE CANADIAN GALLON Note that the United States and the Canadian gasoline measures are not the same.

APPROXIMATE DISTANCES From Winnipeg To Canadian and United States Cities

Table of approximate distances from Winnipeg to various Canadian and United States cities.

Lake Manitoba Basin Used

Table of radio stations in Manitoba, listing call letters and frequencies.

Table of hours of service for Canadian and United States customs offices.

Should you at anytime need Police Assistance ROYAL CANADIAN MOUNTED POLICE DETACHMENTS are available as follows:

Table of police detachments in Manitoba, listing locations and contact information.

THE HISTORICAL DEVELOPMENT OF MANITOBA HIGHWAYS

The early transportation in the area that is now Manitoba was limited to traffic on natural "roads" — the lakes and streams, but in about 1850 the Red River carts made their appearance, converting old Indian trails into the first "highways" in the province.

LOWER FORT GARRY, North America's only remaining stone trading post has been preserved as a national historic park.

THE YORK BOAT, first built at York Factory, was of major importance on the rivers and lakes of Western Canada.

THOMPSON, nickel capital of the north. Manitoba's newest town — Growing to beat '70.

THE CENTENNIAL CONCERT HALL, is head quarters for entertainment and international conventions during 1970.

RAINBOW STAGE, Manitoba's year-long salute to the performing arts is called Festival '70.

COLOR AND RHYTHM — a gift of our native people to the spirit of Manitoba's Centennial.

Manitoba celebrates its 100th birthday in 1970, and you're all invited to participate — to be a part of the party.

Centennial celebrations include Sports '70 — national sporting events, car rallies and Manitoba school children competing for Centennial awards. Festival '70 is Manitoba's year-long salute to the performing arts — from rock to the classics. Special Events is everything from a Royal Visit on July 15th (our official birthday) to a Manitoba school exchange program.

It's a good year to see Manitoba's historic sites, to re-visit your home town. Get to know Manitoba again during Centennial 1970.

For further information contact: The Manitoba Centennial Corporation 555 Main Street Winnipeg 2, Manitoba, Canada

Before Manitoba was a province, one of the transportation links with what was then Canada was the old "Dawson Trail" — laboriously built between the Northwest Angle on Lake of the Woods to Winnipeg.

In this our centennial year, our road map lists highway links with many parts of Canada; with our southern neighbor, and with the many areas and communities within our own province: a 12,000-mile road system in all, for a population of approximately one million.

The striking road system, alone, that has developed since our entry into Canadian nationhood as the first daughter of Confederation, is perhaps cause for celebration; for it spans from prairie to pre-Cambrian rock; from sophisticated urban centres to the sub-Arctic. More important, in this our centennial year, it shows that all roads truly lead to Manitoba.

To former Manitobans returning for our centenary, we say welcome home, and may you journey in comfort and safety; to visitors to Manitoba during our centennial year, we welcome you warmly, for you will find an alert, happy citizenry, justly proud of our province, of our traditions, and of our contribution to the development of our nation.

The 1970 Manitoba road map shows a number of things; it shows the beginnings of a postage-stamp province in 1870; its extension throughout the agricultural regions of our province in 1881, and its broadening north to the 60th parallel in 1912, an extension which brought the vigorous, developing northland into Manitoba. The map also shows several new parks which, as part of our provincial observations, we in Manitoba have added to our recreational systems. It shows a province — a so-called "prairie" province with a seaport of its own, and with a multitude of lakes, streams and forests — of great variety and interest. The map, too, shows the promise of adventure and exploration by car, in the very heart of the North American continent.

So I ask that the Manitoba Highway Map of 1970 be your guide to happy travelling in our province during this our centennial year.

At the left is a reproduction of the first Official Map of the Province of Manitoba, drawn in 1871. The area within the shaded border shows what was then called "The Postage Stamp Province".

Ed Schreyer EDWARD SCHREYER, Premier of Manitoba.

