

INDEX TO CITIES, TOWNS AND VILLAGES

with population of principal points (50 or over)

Index to cities, towns and villages with population of principal points (50 or over). Includes columns for location, population, and other details for various municipalities across Manitoba.

As Manitoba enters its second century it is important to remember the part played by roads in the development of this province. Roads spreading across the prairies opened them to agriculture and created a new economic base. Now we look to Manitoba's northland as a new frontier, rich in mineral, timber and water resources. Our continuing program of northern road development will make it possible to open this area for new wealth and for recreation. The changes in the road system are reflected in this year's map and the ever-increasing network of northern roads will be a feature of maps in the years to come. At the same time, improvements are being made to the heavily-travelled routes of southern Manitoba, including lane additions, by-passes and interchanges on the Trans-Canada Highway, and completion of the Panmar Highway circling Metropolitan Winnipeg with special emphasis on overpasses. From its pioneer beginnings our road system has developed into more than 3,900 miles of Provincial Trunk Highways and more than 7,500 miles of provincial roads. Each of these systems has distinctive markers to help you as you drive. There is much to be seen in Manitoba, from the oil fields of the southwest, to the wheat fields of the central plains and the Precambrian forests and unspoiled lakes and rivers of the north. We ask you to drive carefully and help make our roads a safe and enjoyable way to see Manitoba.



Joseph P. Borowski, Minister of Public Works and Highways

FOR FURTHER INFORMATION WRITE: TOURIST BRANCH DEPARTMENT OF TOURISM, RECREATION & CULTURAL AFFAIRS 408-401 YORK AVE. WINNIPEG 1, MANITOBA, CANADA

WHEN TRAVELLING ON MANITOBA HIGHWAYS... Put your Trash into Orbit...

THE CANADIAN GALLON Note that the United States and the Canadian gasoline measures are not the same. The Canadian gallon is based on the imperial quart, which is one-fifth larger than the United States quart. (5 Canadian gallons = 4 United States gallons)

Table of approximate distances from Winnipeg to Canadian and United States centres. Lists cities like Boston, Chicago, Dallas, Denver, etc. with distances in miles.

MANITOBA MILAGE GUIDE

Manitoba Mileage Guide showing distances between major cities and towns across the province, such as Brandon, Winnipeg, and Selkirk.

RADIO STATIONS IN MANITOBA

Table listing radio stations in Manitoba, including call letters, frequencies, and service hours.

HOURS OF SERVICE CANADIAN AND UNITED STATES CUSTOMS BORDER OFFICES

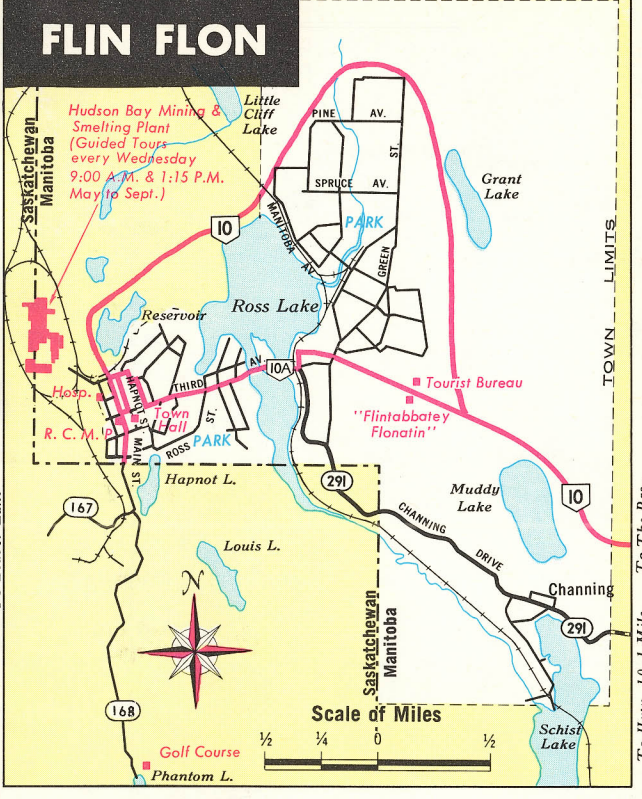
Table showing hours of service for Canadian and United States customs border offices at various locations.

Should you at anytime need Police Assistance ROYAL CANADIAN MOUNTED POLICE DETACHMENTS are located as follows:

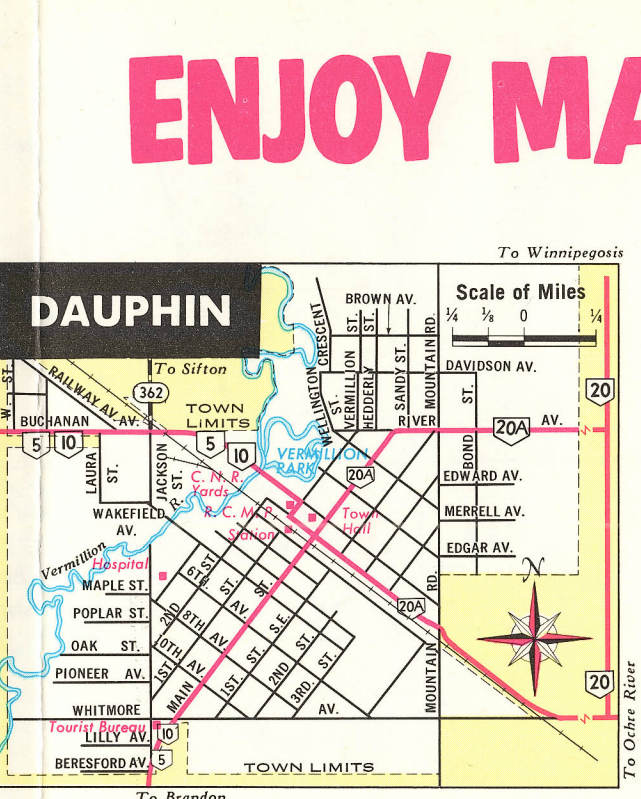
Table listing Royal Canadian Mounted Police detachments across Manitoba, including locations and contact information.

TOURIST INFORMATION Detailed information regarding camping, fishing, hunting or accommodation may be obtained from the Tourist Information Office in the Manitoba Legislative Building, Winnipeg, Phone Win/Mtn 6-7131.

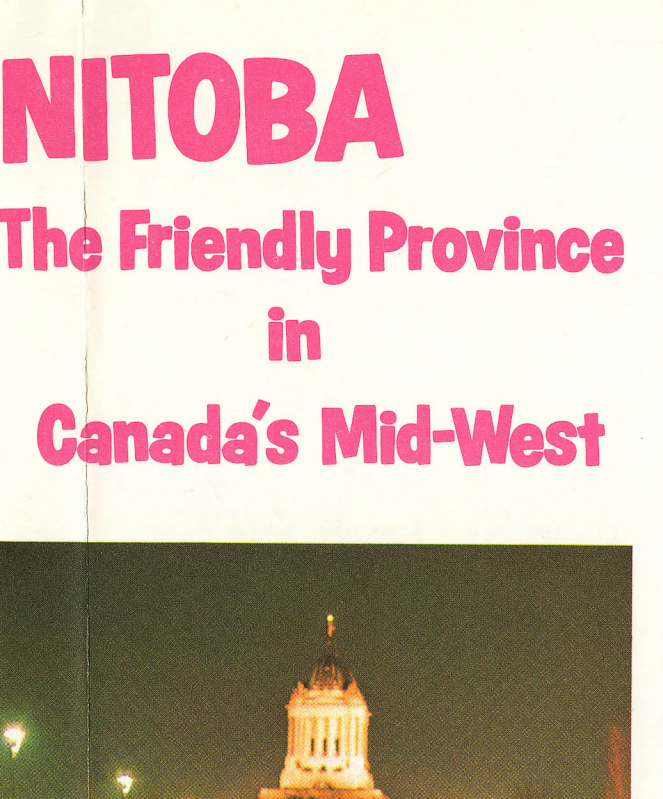
VACATIONERS!! watch for these signs



FLIN FLON



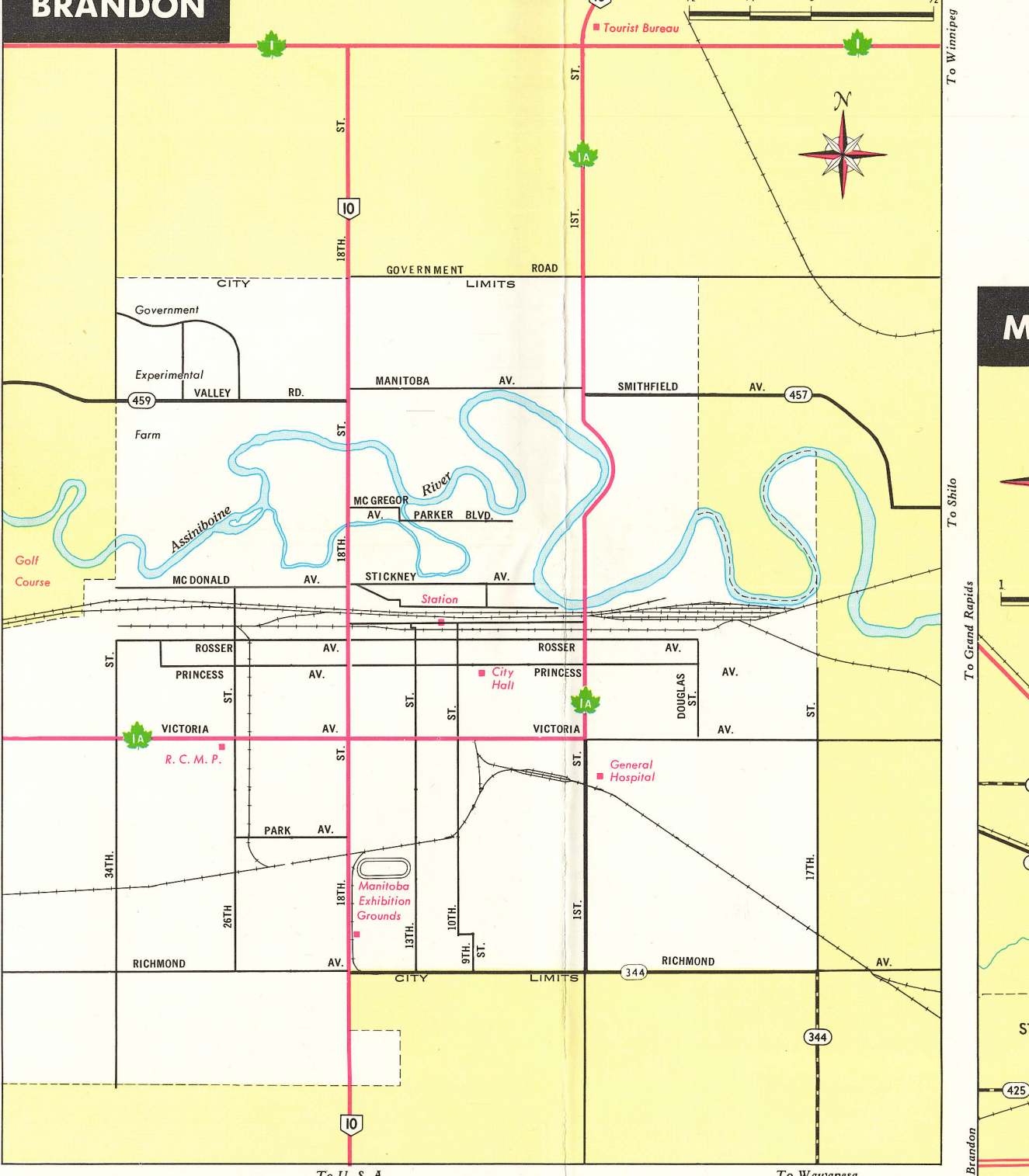
DAUPHIN



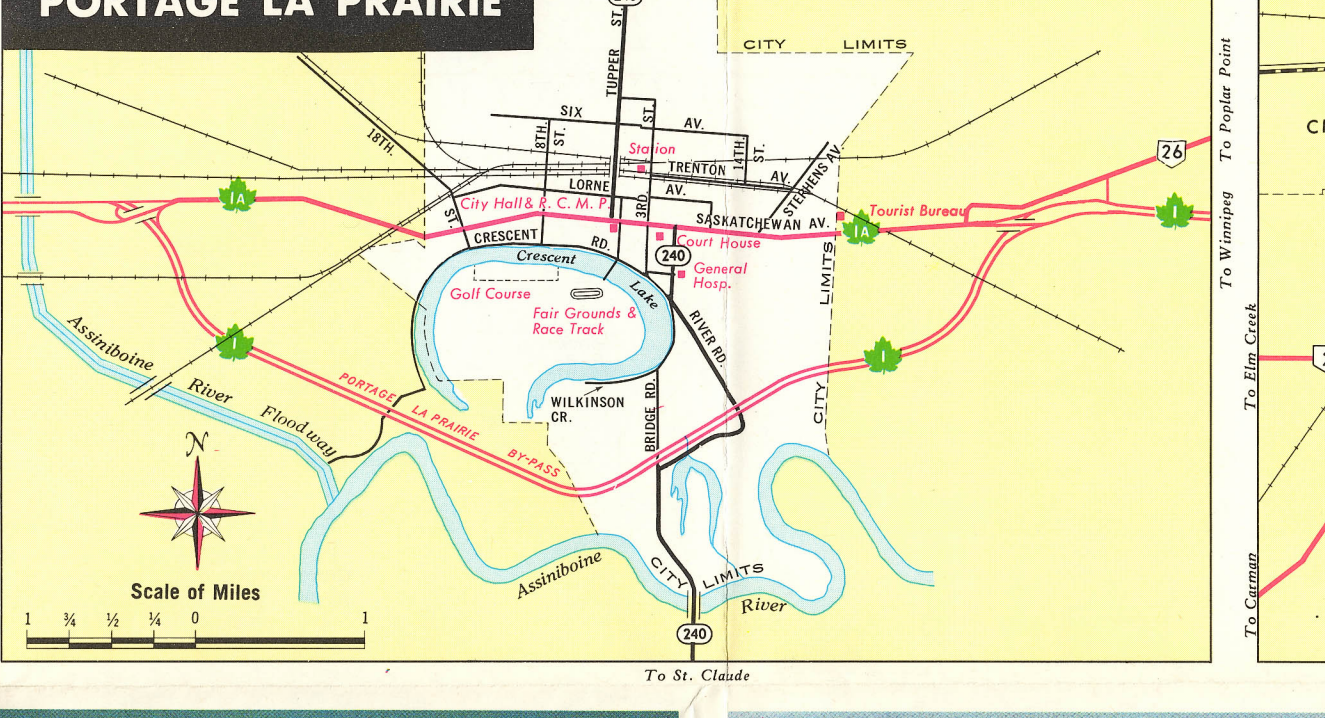
THOMPSON



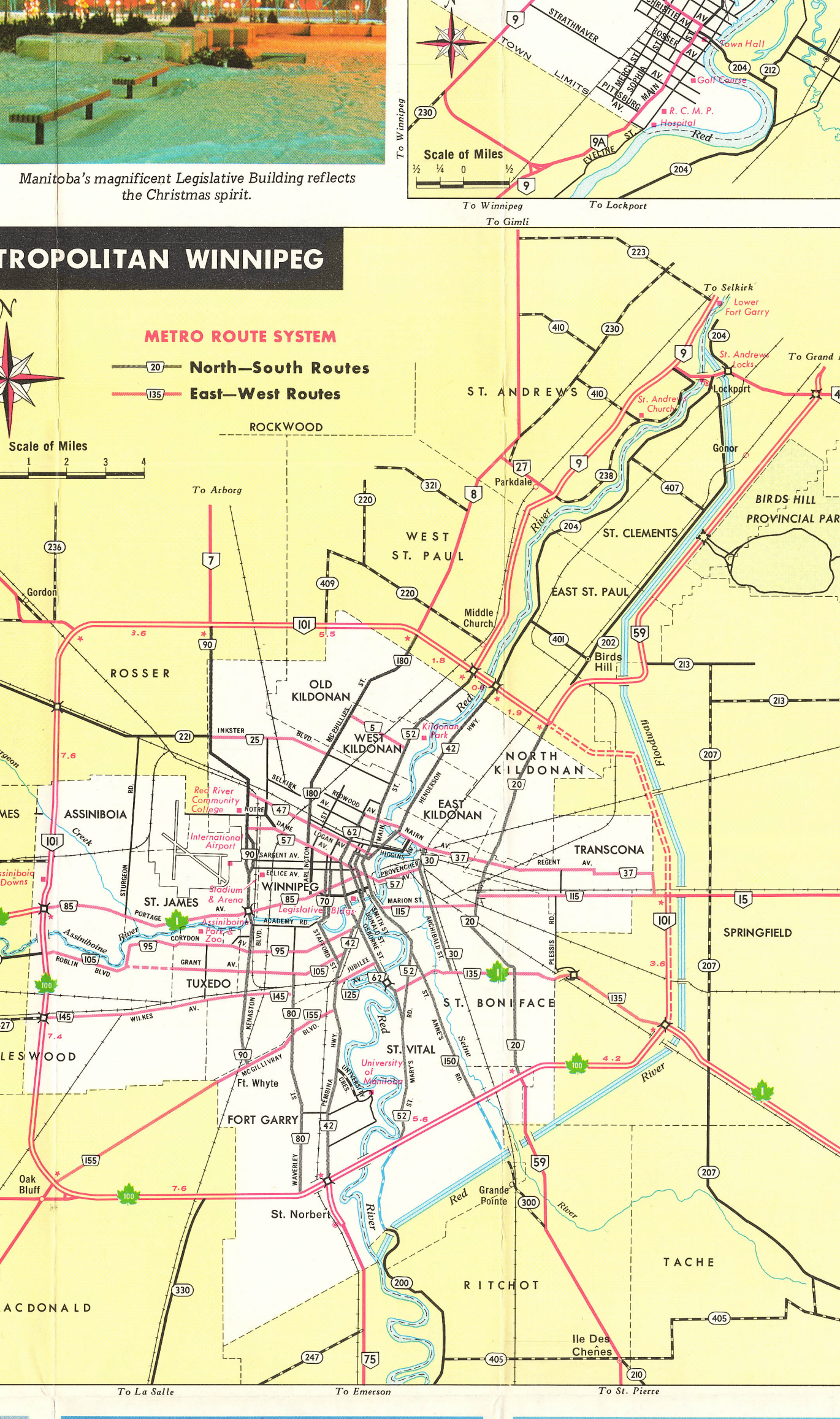
SELKIRK



BRANDON



PORTAGE LA PRAIRIE



METROPOLITAN WINNIPEG

